

Note: Colors shown in this brochure may vary from the actual product, due to printing process there may be varying degrees of color phenomena.

Marketed by:
Mass Decor

Manufactured by:
Mass Transit Equipment India LLP



+91- 9727727683



sales@masstransitequip.com



masstransitequip.com



Plot no. 405/1,
Ashwamegh Estate, Changodar,
Sarkhej Bavla Road,
Opp. Medicare Biowaste,
Ahmedabad, Gujarat, India,
382213.



LIGHT.STRONG.RELIABLE

**Honeycomb
Wall Panel
Manufacturer**

Brand Value

Integrity

There's a quiet strength in doing what's right, even when no one is watching. Every decision, every detail, carries the same intent, to stand true to our word, to let our actions speak long after the work is done. When precision meets conscience, it forms something unshakable, a foundation you can always depend on.



Innovation

Progress begins where curiosity refuses to settle. We see possibilities in places others overlook, reimagining materials, design, and form until the ordinary becomes exceptional. Each idea carries motion, each creation reflects a step forward, shaping spaces that don't just exist, but evolve.

Transparency

Clarity invites connection. We believe in open dialogue, shared understanding, and decisions that can be seen, not hidden behind process, but illuminated by purpose. When everything is clear, collaboration flows naturally, and confidence becomes effortless.



Contents

05 Full Aluminum Honeycomb Wall Panel

11 SPC Aluminum Honeycomb Wall Panels

17 All- Aluminum Honeycomb Seamless Wall Panels

18 SPC Aluminum Honeycomb Seamless Wall Panels

19 Stone honeycomb wall panels

21 All aluminum baseboards

22 All aluminum grille

24 8/9mm strip for wall panels

Full Aluminum Honeycomb Wall Panel

Product Name

Full Aluminum Honeycomb Wall Panel

Material Structure

Surface Material : Aluminum sheet + PETG film (optional coating for enhanced texture and protection)

Aluminum thickness : 0.48mm or 0.65mm Epoxy Coating
PETG film ensures scratch resistance, stain resistance, and easy cleaning

Core Material : Honeycomb core (4x4 density)

Provides high compressive strength and impact resistance Adhesive Layer
Lightweight with excellent sound and thermal insulation
High adhesion strength, anti-aging, good adhesion, formaldehyde-free

Product Specifications

Total thickness : 9mm

Standard size : 1.22m x 2.75m (custom sizes available)

Structural Advantages of Full Aluminum Honeycomb Panels

The honeycomb sandwich composite structure consists of densely arranged aluminum honeycomb cores interconnected like miniature I-beams. This unique design delivers exceptional performance:

Uniform Load Distribution

The honeycomb core is bonded across the entire panel, dispersing pressure evenly from the surface.

Prevents shear stress and enhances bending resistance, ensuring superior stability under heavy loads.

High Rigidity & Flatness

Resists deformation under pressure, maintaining excellent flatness even in large-span installations (e.g., ceilings or tall walls).

Ideal for applications requiring seamless, smooth surfaces.

Custom 3D Shaping

Precision groove-cutting (backside milling) allows for curved or sculptural designs without compromising structural integrity.

Enables creative architectural features (e.g., undulating walls, geometric patterns).

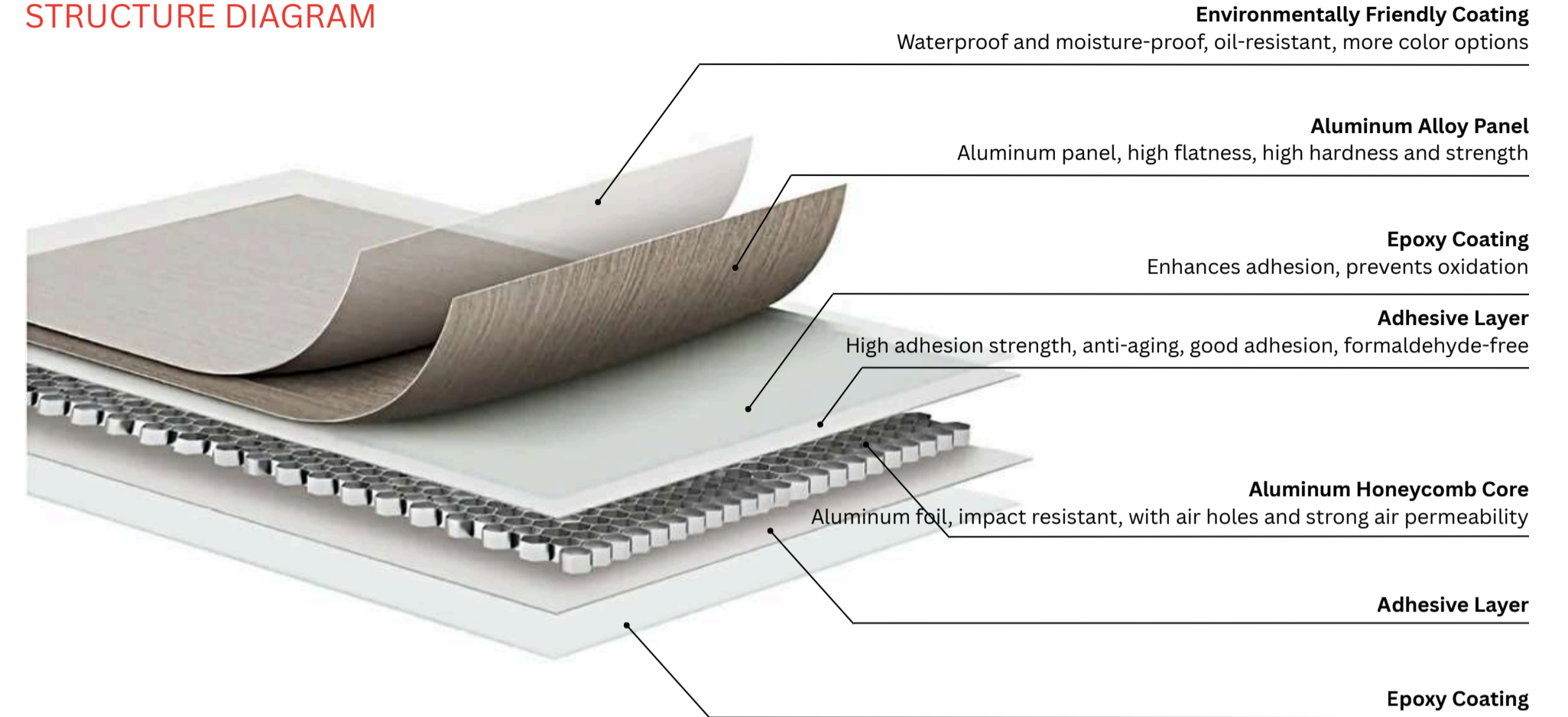
Lightweight Yet Strong

The hollow-core design reduces weight while outperforming solid materials in compressive strength-to-weight ratio.



Full Aluminum Honeycomb Wall Panel

Product Structure Diagram STRUCTURE DIAGRAM



CHARACTERISTIC ADVANTAGES



Fireproof Materials

It features excellent fire-resistant properties, effectively enhancing flame retardant performance



Flat Surface

Excellent processability – Made from high-quality aluminum alloy sheets as the base material, ensuring superior surface flatness



EO Grade No Formaldehyde Release

No formaldehyde release, green and environmentally friendly, The test results have reached EO level, meeting the international human standards of health and environmental ion.



Ultra High Strength

The multilayer composite structure makes it have excellent rigidity, high wind resistance and bending resistance.



Scratch And Wear Resistance

Enhanced surface durability – The material incorporates hard-wearing components that provide exceptional scratch resistance and surface protection against damage



Fade-resistant

Superior weather resistance – The material exhibits excellent tolerance to acids and alkalis, ensuring the surface color remains vibrant and fade-free for up to 30 years



Moisture Proof

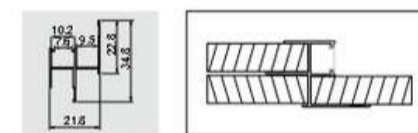
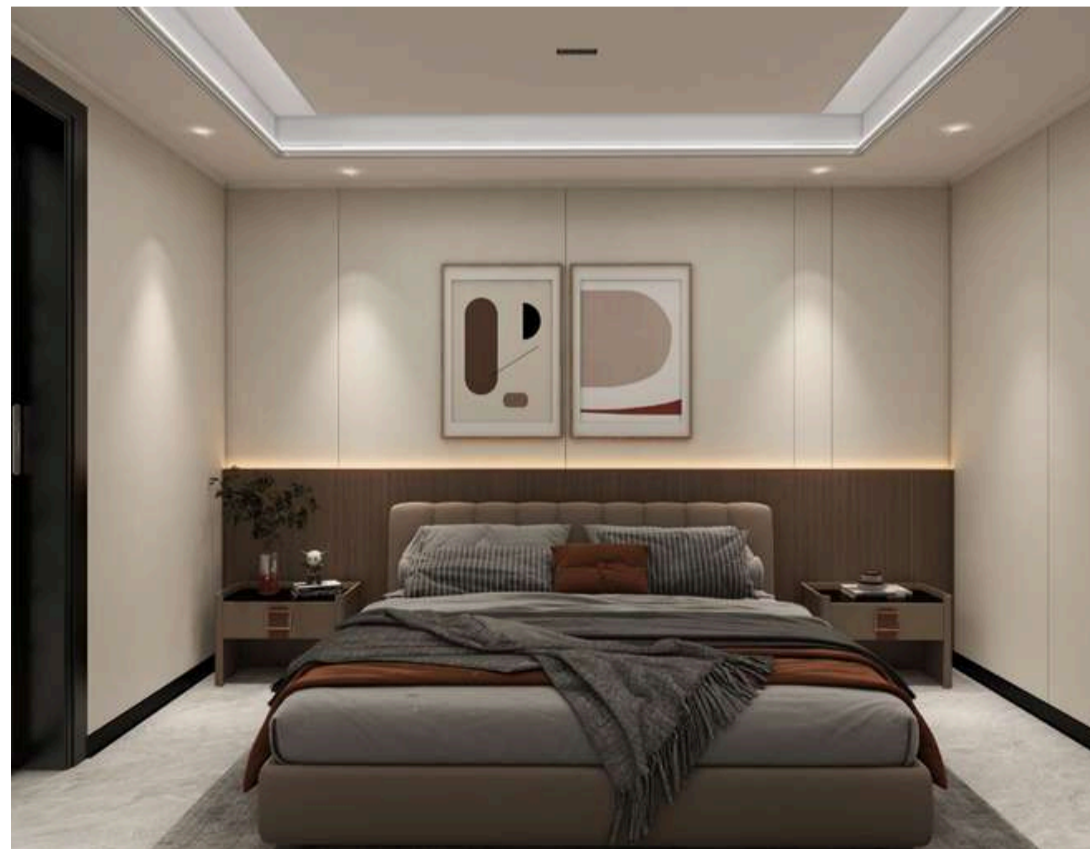
In a humid environment, the product has multiple advantages such as the function of isolating water vapor and preventing mildew



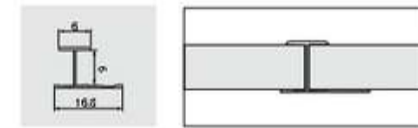
Extremely Easy To Install

It has good processing performance, simple slotting operation, fast installation, and is more convenient than traditional tool installation methods.

Full Aluminum Honeycomb Wall Panel



LW212-9



LT701-8



MLD001



MW009

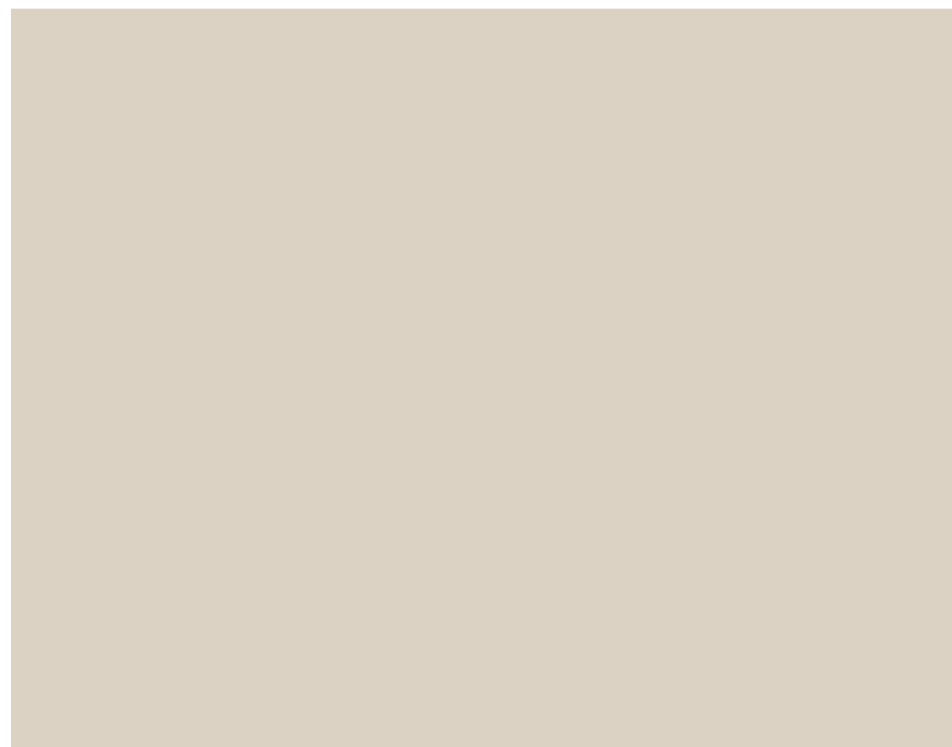
Full Aluminum Honeycomb Wall Panel

Unique design ,comfort and fashion coexist, the ultimate exquisite texture, so elegant and cozy coexistence, restore a balanced and elegant of the mood of life, highlighting the remarkable character of life.





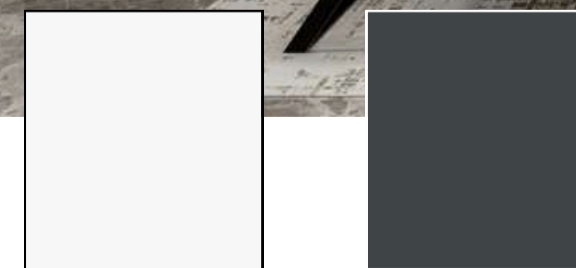
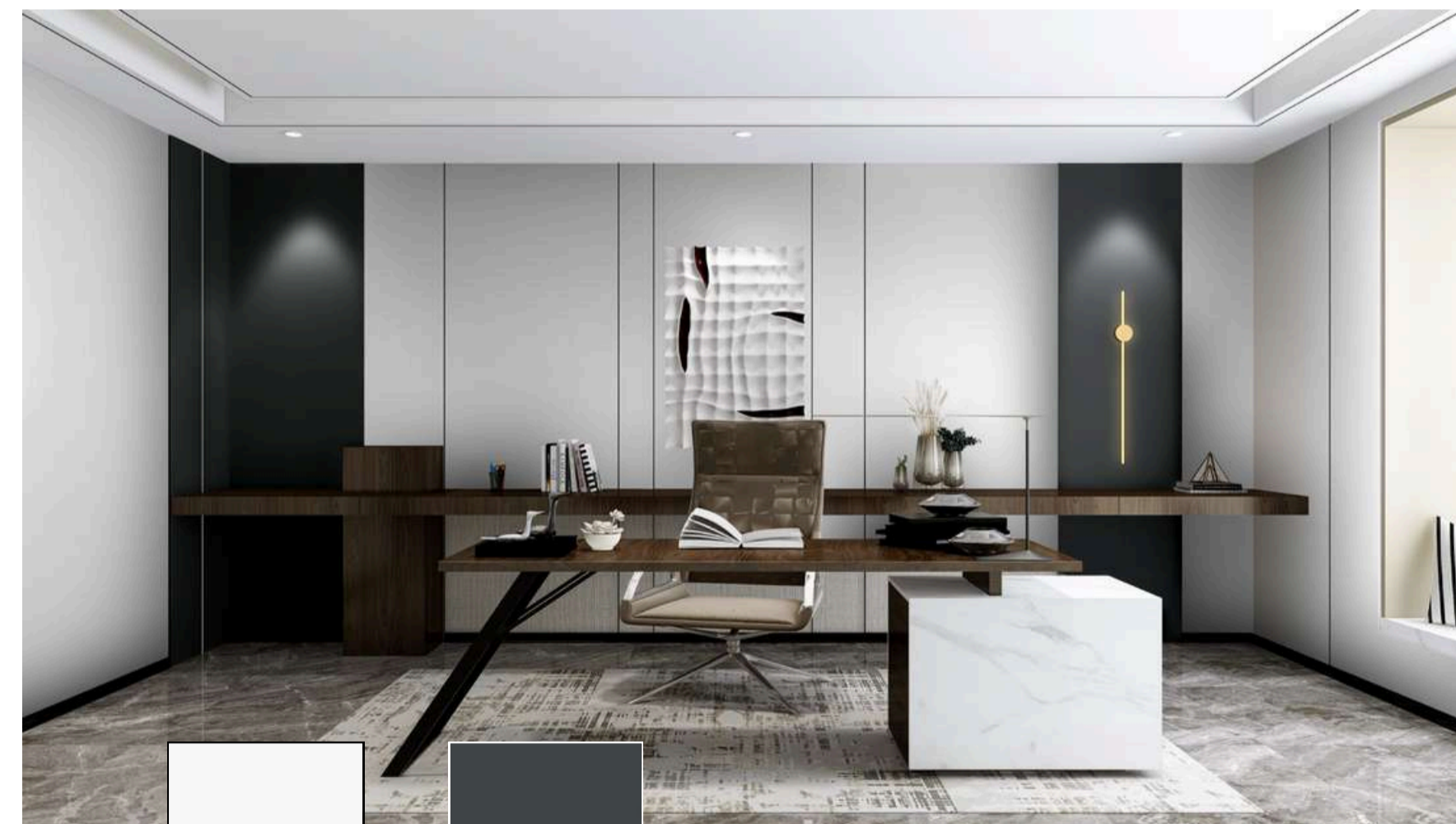
Stylish modern home, dark gray and beige with the new, elegant and gentle with a low-key dignitaries can be temperament, can be just soft, visible, the home is a know how to live the clever.



MW009



MLD017



Grasp the connotation of space, filling the noble body gorgeous brick, soft lighting, delicate lines, clever mix, effort to build a stylish atmosphere of modern luxury space integration.

SPC Aluminum Honeycomb Wall Panel

Structural diagram of stone plastic aluminum honeycomb wall panel

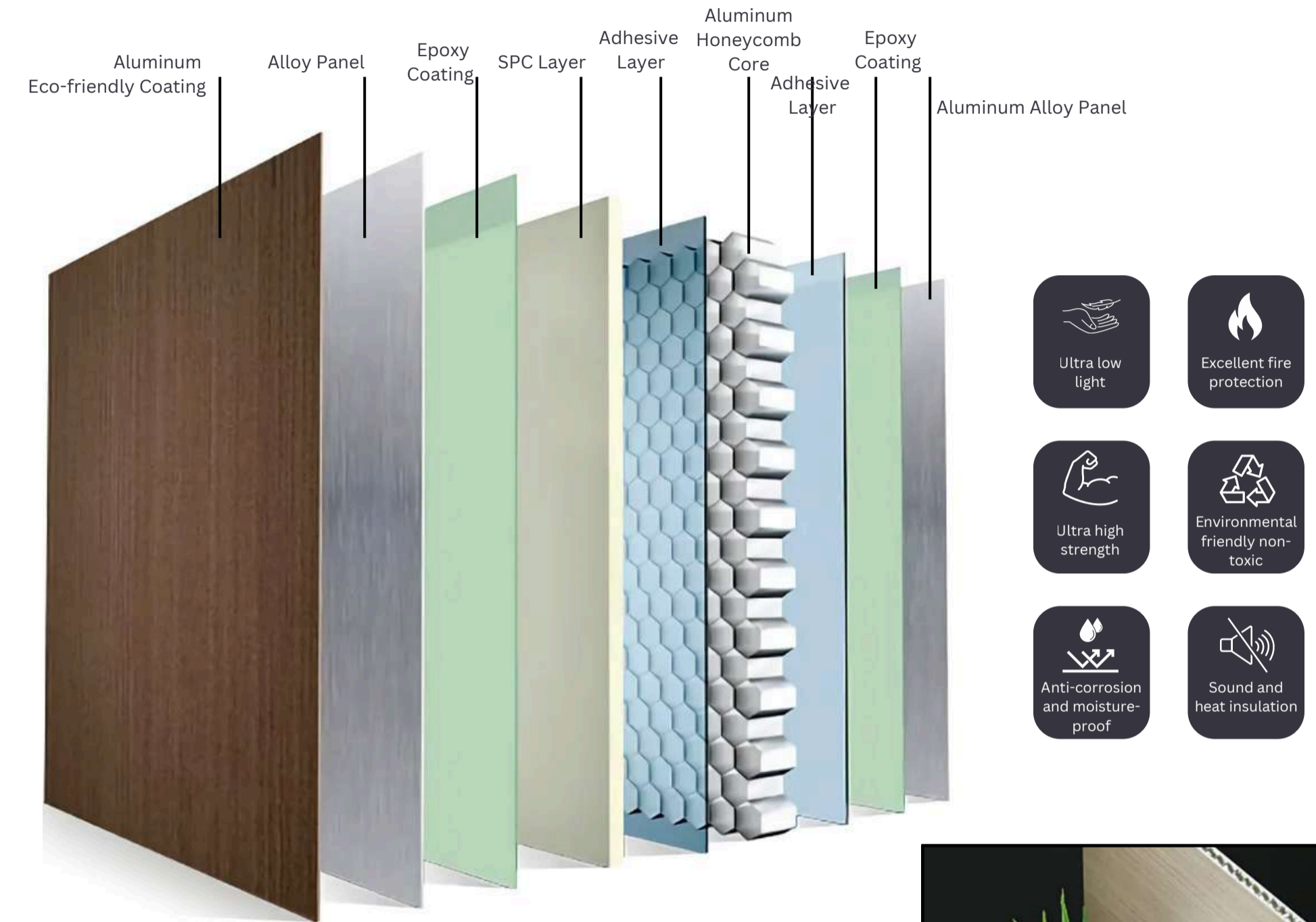


SPC Aluminum Honeycomb Wall Panel

Structural diagram of stone plastic aluminum honeycomb wall panel

SPC

Structural diagram of stone plastic aluminum honeycomb wall panel



CHARACTERISTIC ADVANTAGES

Shock Resistance/Vibration Damping

When the variable-resistant aluminum honeycomb composite panel layer is subjected to external impact, it can convert the impact force into the plastic deformation energy of the honeycomb core, thus effectively absorbing the impact energy. Through the self-falling ball impact experiment on the variable-resistant aluminum honeycomb composite panel, by observing the indentation marks and the depth of the indentation at the impact site, it is found that there are no cracks at the impact site. This indicates that the variable-resistant aluminum honeycomb composite panel has good toughness and strong impact resistance. It can absorb most of the energy through its own deformation and has a good vibration - damping effect.

Noise insulation/Thermal insulation

The honeycomb-shaped irregular holes form hexagonal prism-shaped enclosed spaces. The air layer between the upper and lower panels is also divided into numerous enclosed holes, which prevents air circulation. It is very difficult for heat to be transferred in this structure in the forms of convection and radiation. The propagation of sound waves is also greatly restricted in it.



SPC Aluminum Honeycomb Wall Panel

Structural diagram of stone plastic aluminum honeycomb wall panel

Product Information:

Product Name: SPC (Stone Plastic Composite) Honeycomb Wall Panel - Aluminum Clad
Material: Aluminum Honeycomb Core + Stone Plastic Composite (SPC) + Aluminum Skin
Thickness: 8mm/9mm
Surface: Roller Coated Aluminum Skin
Standard Sizes: 1.22m wide x 2.44m / 2.6m / 2.8m / 3m / 3.2m high

Advantages of SPC (Stone Plastic Composite) Honeycomb Wall Panels:

SPC has high hardness.
The surface is laminated with scratch-resistant and abrasion-resistant aluminum skin.
It is resistant to scratches and impact.
The aluminum honeycomb core in the middle makes it relatively lightweight.
It is moisture-proof, fire-resistant, and termite-proof.
It can be installed using metal trim.

Information about SPC

The main materials of SPC are natural stone powder and PVC resin. These materials are nationally recognized as not containing harmful substances and do not release formaldehyde. In recent years, SPC has become an important green and environmentally friendly decorative material, mainly used for polishing SPC panels.
The advantages of SPC include being non-polluting, not containing radioactive elements, lightweight, strong abrasion resistance, and long service life. SPC panels have strong abrasion resistance, are not prone to mildew and deterioration, can adapt to changes in indoor temperature, and will not deform due to temperature changes. They are also relatively easy to maintain.



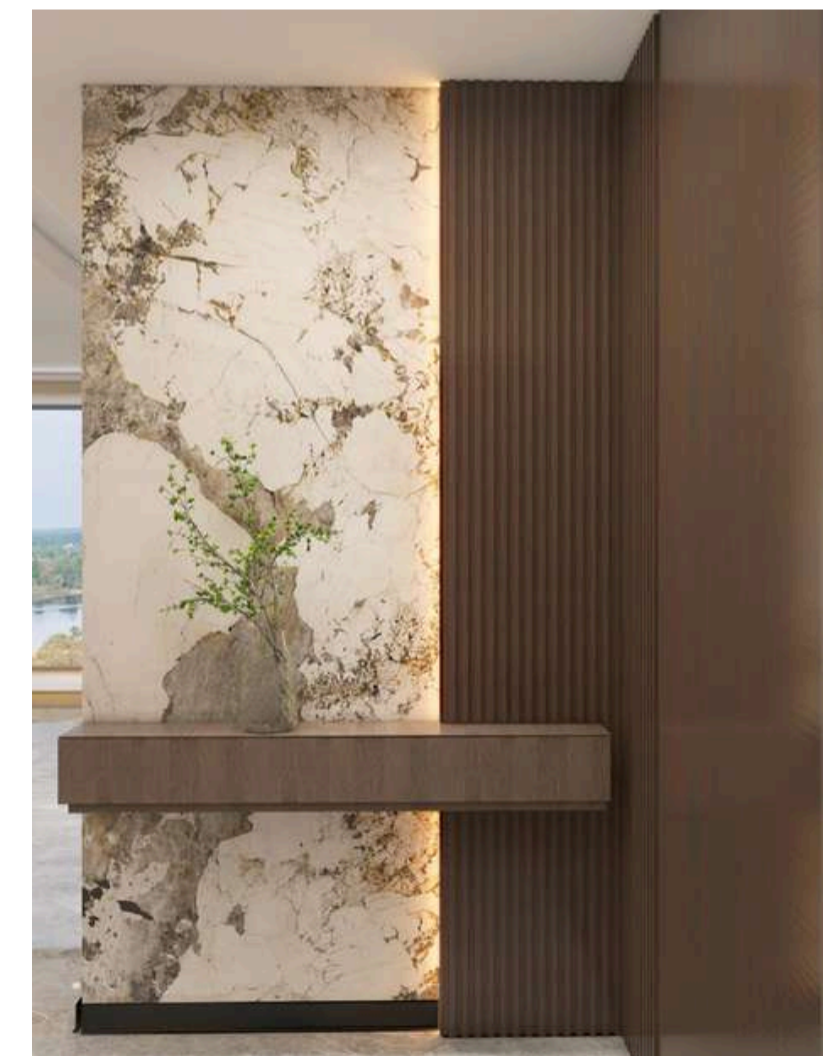
SPC Aluminum Honeycomb Wall Panel

Structural diagram of stone plastic aluminum honeycomb wall panel



CHINESE STYLE

The space paved with elegant colors,
Every design comes from the love of life,
A stylish and artistic ceiling wall,
Decorate the perfect space.





Six Key Highlights of All-Aluminum Honeycomb Wall Panels

Tight Groove Mating: Fewer gaps, extremely minimalist.

Nano Anti-Oil Stain Coating: Oil-resistant, easy to clean.

All-Aluminum Material: Truly waterproof, fireproof, and insect-proof, with recycling value.

Safe and Environmentally Friendly: 0 Formaldehyde, ready to install and live in immediately.

All-Aluminum Material: Can be shaped and installed via mortise grooves on the back.

Stable Performance: No thermal expansion or contraction, lifespan up to 30 years.

Specifications: Width: 600/1200mm, Height: 2750mm, Thickness: 9mm



In the busy and comfortable alternately, the wonderful interpretation of the noble attitude of life. Quality of life attitude, focus on the point, line, surface of the perfect condensation, the interpretation of a sudden life.

All-aluminum honeycomb Seamless wall panels

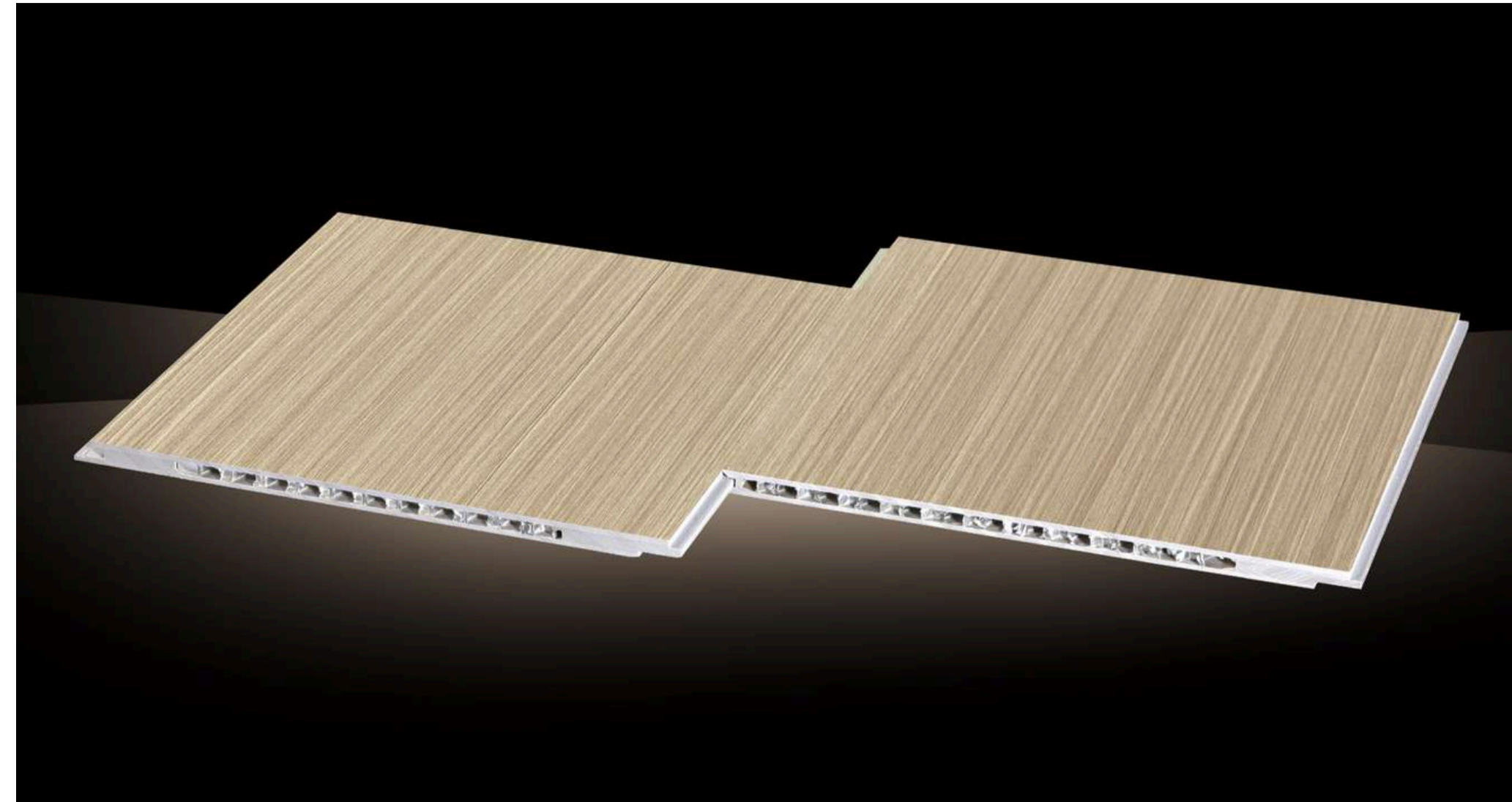


Art projects the deep secrets of human habitation, expresses the inner rhythm of life, and also summons a higher realm of life. Full of artistic matching, beautiful and meticulous effects, nobility is reflected in every moment.



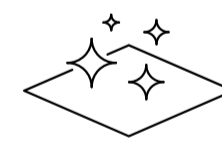
SPC Aluminum Honeycomb Seamless Wall Panel

The 3rd generation SPC aluminum honeycomb wall panel



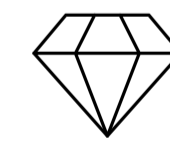
SPC Aluminum Honeycomb Seamless Wall Panels

Subtitle: Better Quality / Bigger Vision / More Beautiful Design / Superior Experience



Seamless and Simpler

Seamless technology makes the panel surface more simple and atmospheric, more suitable for high-end minimalist decoration. Stylish and versatile, showing great air.



More Solid Collision-Resistant

Honeycomb core distributes like I-beams across the entire panel surface, dispersing panel pressure, making the panel more solid, moisture-proof, and impact-resistant.



More Clean and Oil/Dirt-Resistant

Uses a nano-coating, making it difficult for oil and dust to adhere. Wipe with water to remove. Enjoy cleanliness with a single wipe.



Fireproof and High-Temperature Resistant

Aluminum materials have good heat resistance, are flame-retardant and moisture-resistant. The honeycomb structure reduces heat transfer, providing thermal insulation.



Anti-Mold and Bacteria-Free

Aluminum materials have good heat resistance, are flame-retardant and moisture-resistant. The honeycomb structure reduces heat transfer, providing thermal insulation.

Stone Honeycomb Wall Panels

Product Name

Stone Honeycomb Wall Panel

Product Specifications

Actual Stone: 8mm to 10mm

Honeycomb core: 10mm

Surface Aluminum Sheet: 0.9mm

Size: 600mm X 1220mm

1220mm X 2440mm

Available in: Real stones e.g. marble, granite, terrazzo etc.



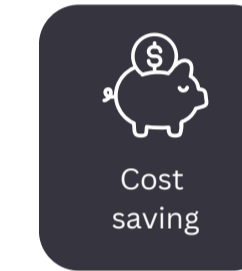
Stone Honeycomb Wall Panels

Usage:

Decorative industrial internal

1. Counter Tops
2. TV unit
3. Internal facade

CHARACTERISTIC ADVANTAGES



All aluminum baseboards

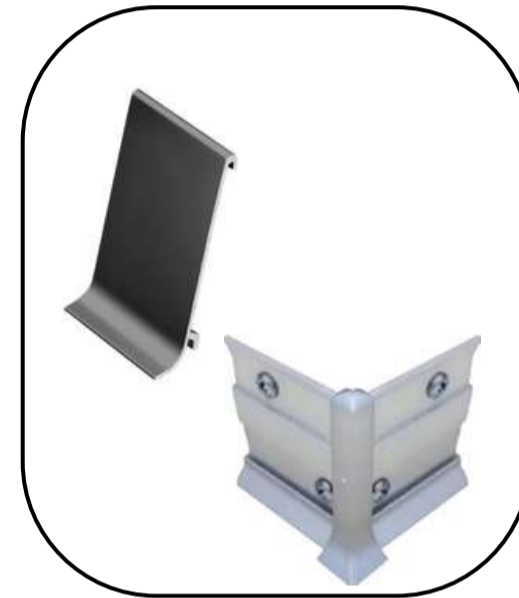
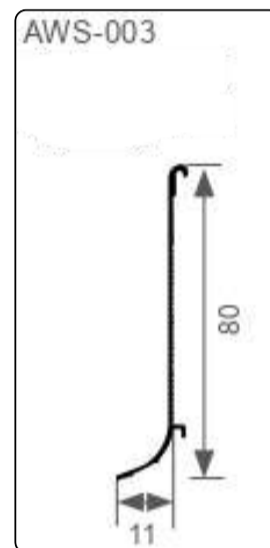
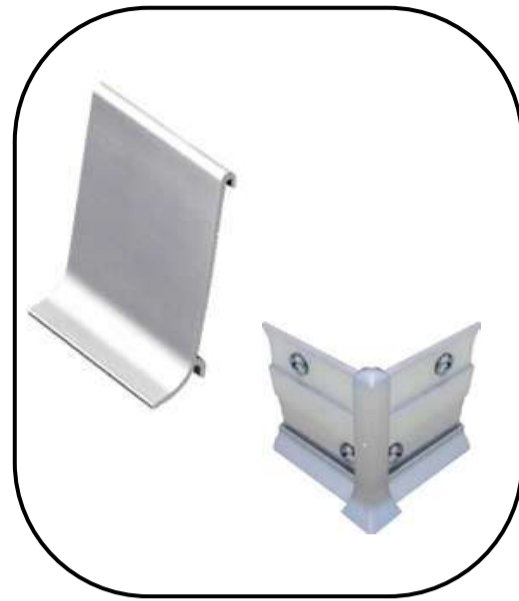
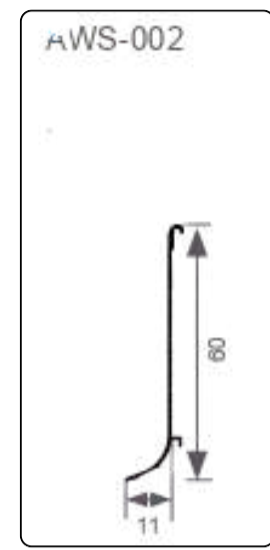
All aluminum grille

Installation 3 Steps

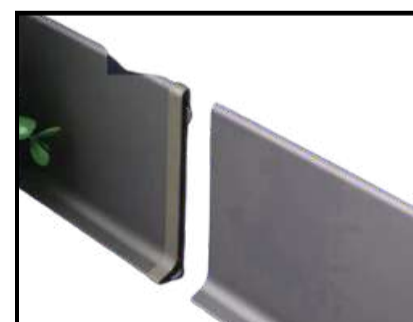
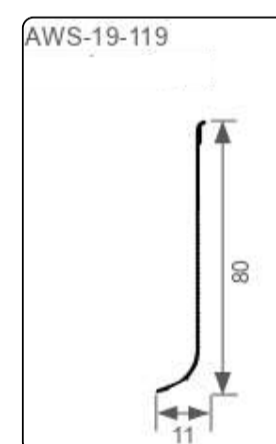
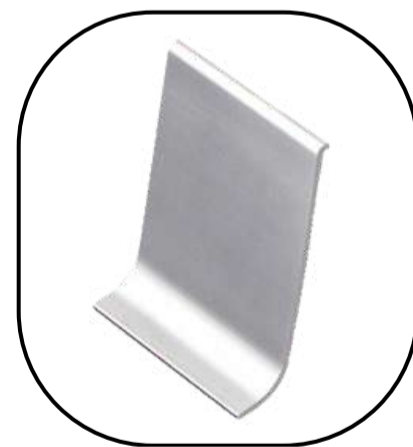
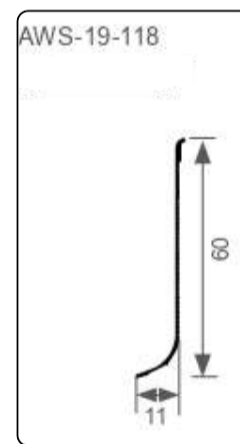
1. Cut the base according to actual needs.
(Can be used in full length or segmented spacing)

Drill holes in the wall and insert plastic anchors.
2. Use self-tapping screws to fix the base with a flat head.
(Inside and outside corners / left and right end caps, simultaneously insert the base locking buckles.)

3. Snap on the top panel.
(Connect the top panel in the middle during splicing and synchronous installation / complete.)



Left End Cap Outside Corner Splicing Buckle Inside Corner Right End Cap



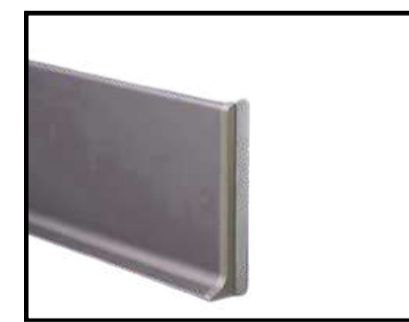
Splicing Buckle



Inside Corner



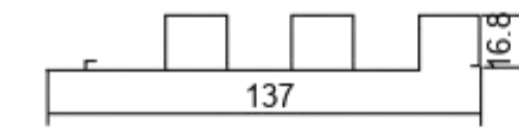
Outside Corner



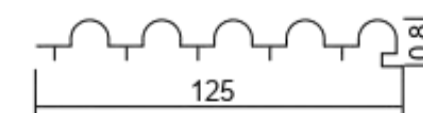
Right End Cap



20mm Square grille panel



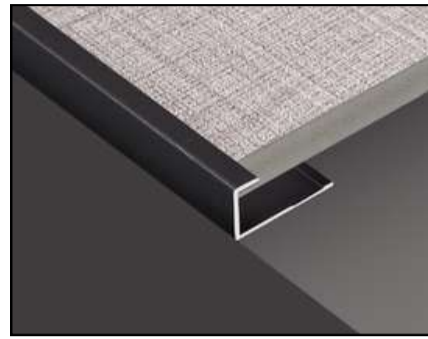
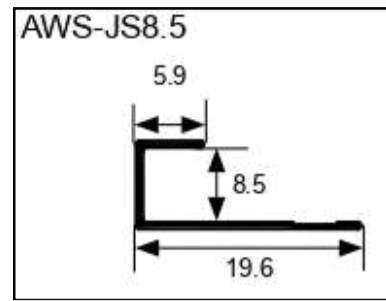
12mm Corrugated board



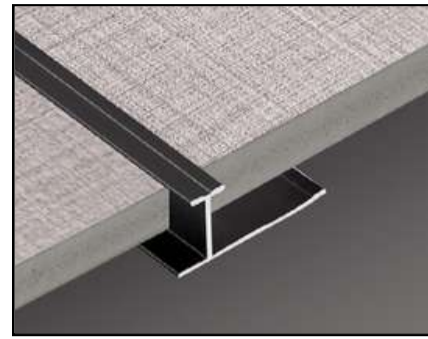
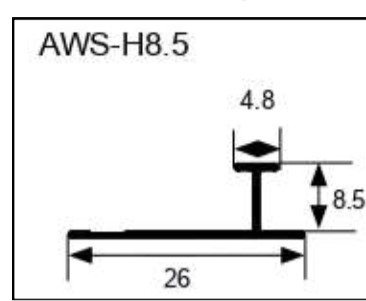
8mm strip for wall panels

8mm wall panel line series

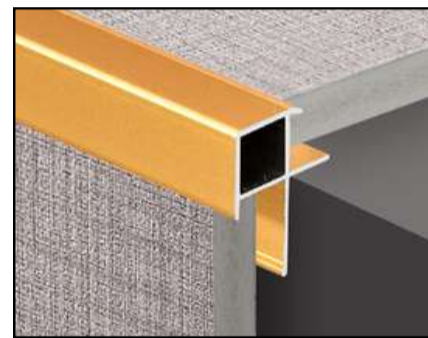
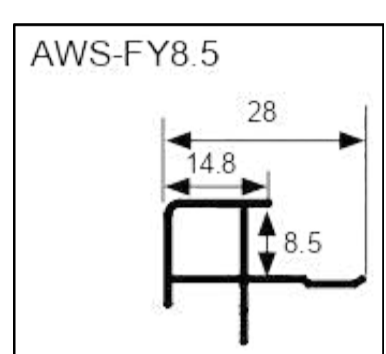
8mm Recess Profile



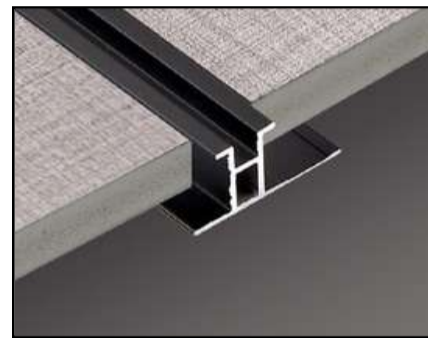
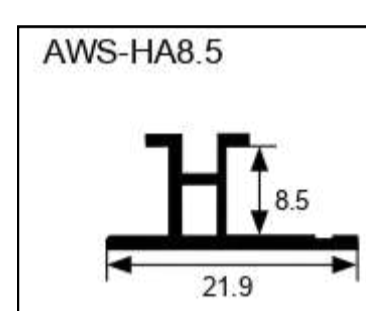
8mm I-Beam profile



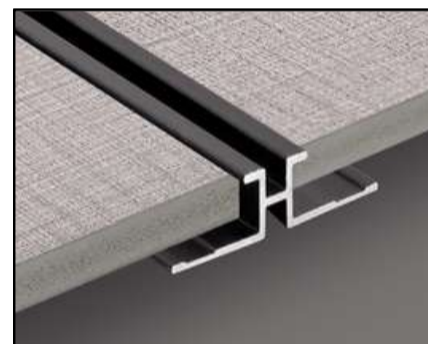
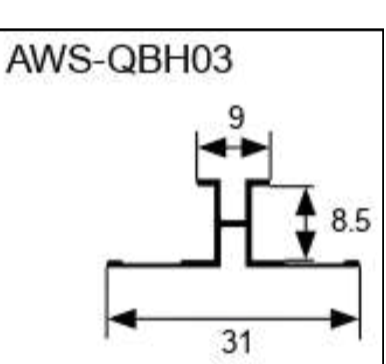
8mm Square External Corner



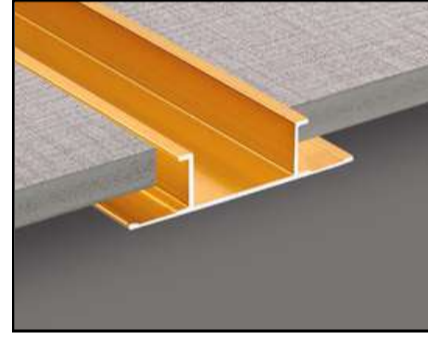
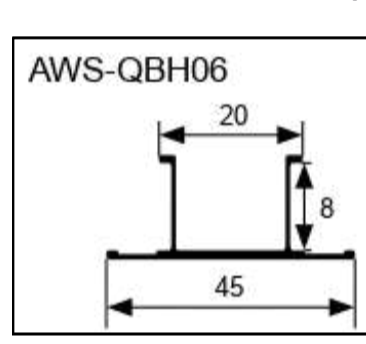
8mm Waistline profile



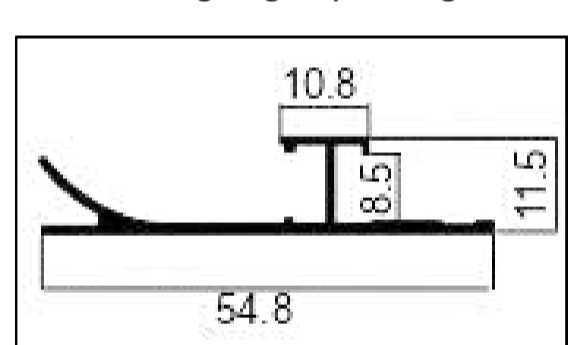
8mm Concave I-Beam Profile



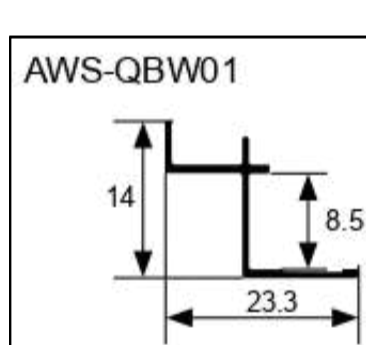
8mm Luminous I-beam strip



8mm Lighting Strip Skirting Line

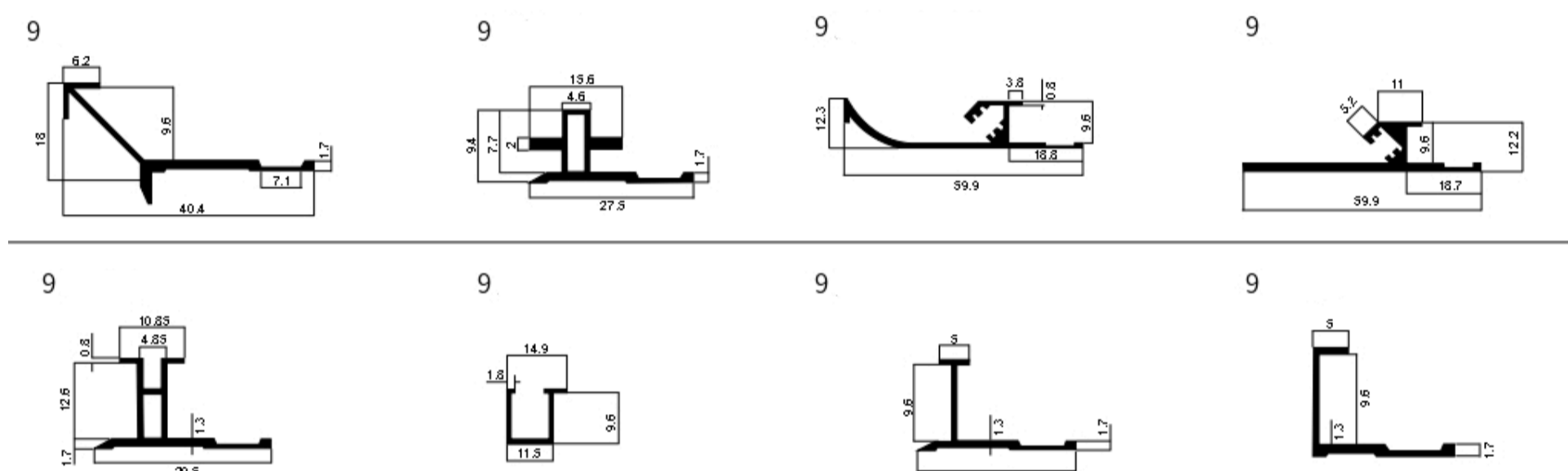


8mm Internal Corner

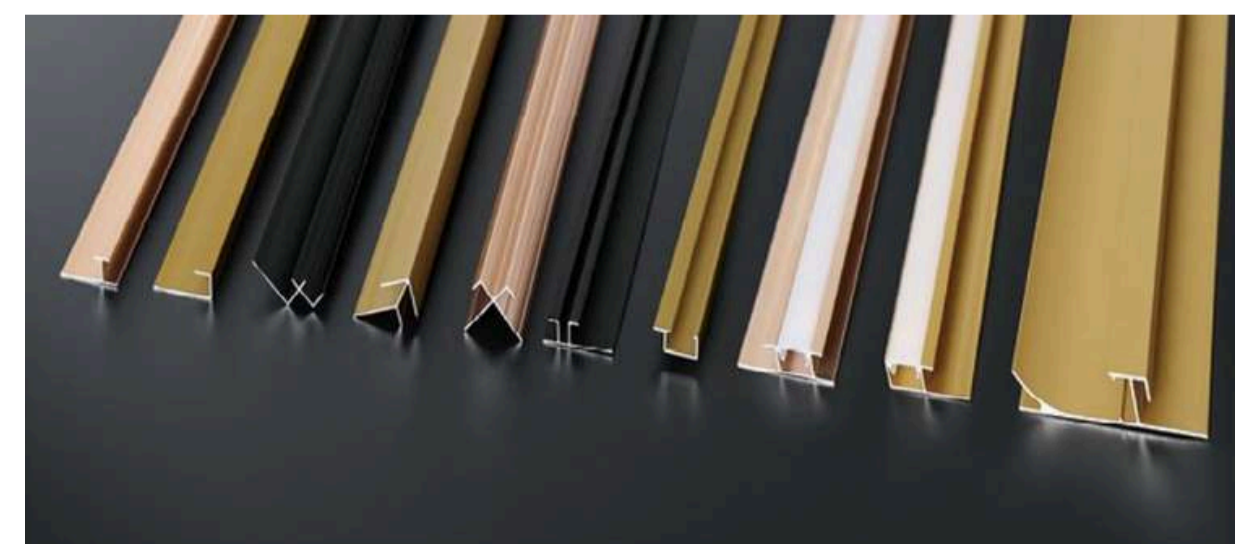
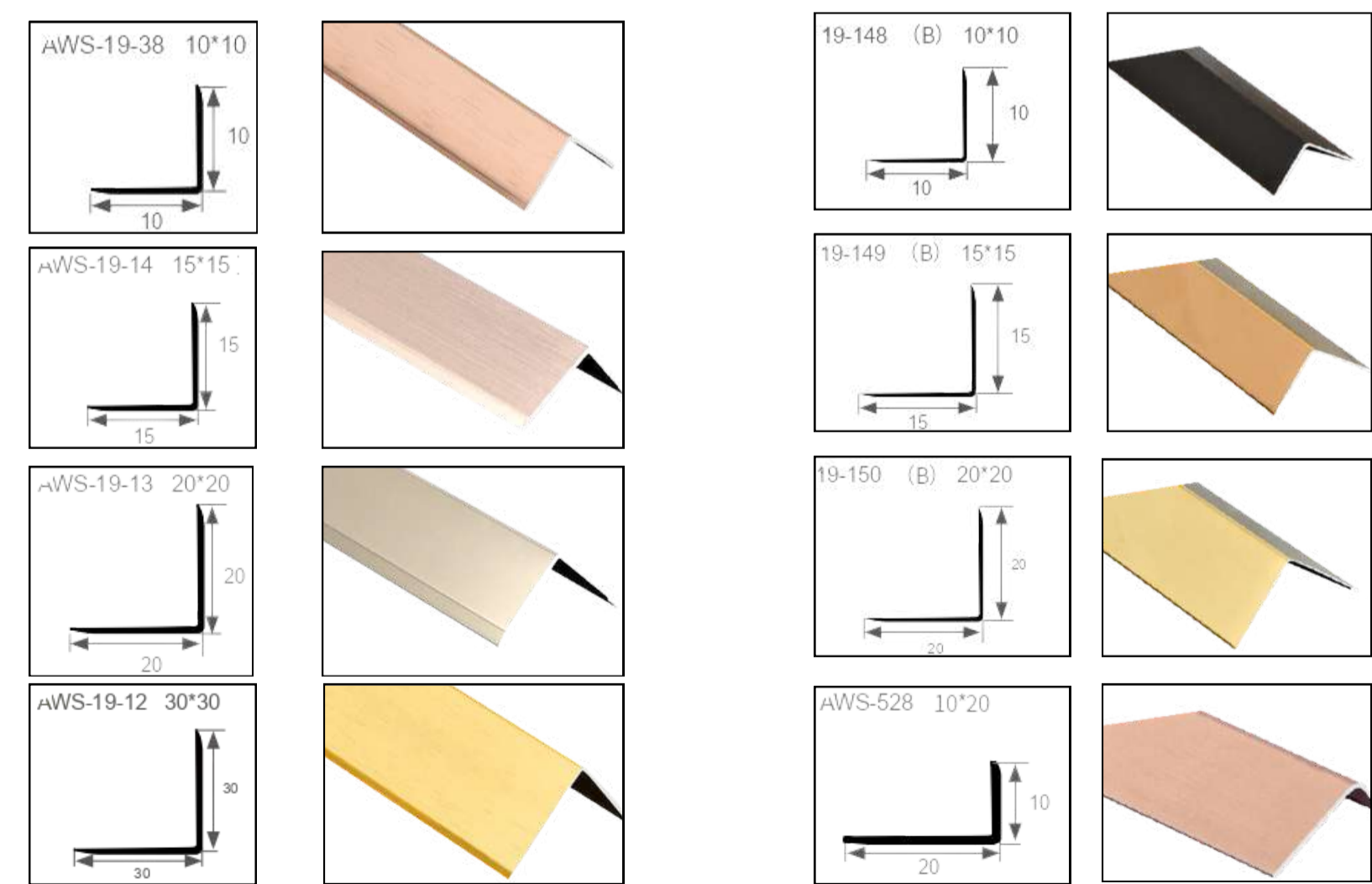


9mm strip for wall panels

9mm wall panel line series



Right angle series



Main Colors: Bright Gold, Bright Silver, Matte Silver, Brushed Bright Black, Brushed Bright Gold, Brushed Champagne, Sandblasted Matte Gold, Matte Black, Matte Gold, Bright Black, Iron Gray, Antique Bronze, Rose Gold.

Application Scope: Hard cladding, soft cladding, wall panels, stone, fiberglass panels, ecological boards, PVC boards, UV boards, fireproof boards (for splicing and styling between two boards).